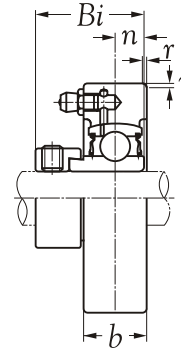
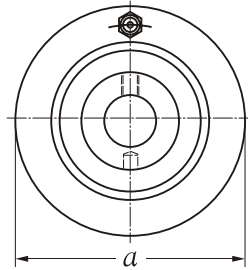




Technical Information



| Shaft dia. mm inch | Unit number | Nominal dimensions | | | | | Bearing number | Housing number | Mass of unit Kg |
|------------------------------------------|-----------------------------------------------------------------|--------------------|---------------|-------------|----------------|----------------|------------------------------------------------------------|----------------|--------------------------------------|
| | | <i>a</i> | <i>b</i> | <i>r</i> | <i>Bi</i> | <i>n</i> | | | |
| 20 3/4 | SAC 204 SAC 204-12 | 72 2-53/64 | 20 25/32 | 2.0 5/64 | 29.5 1.1614 | 7.0 0.2756 | SA 204 SA 204-12 | C 204 | 0.50 0.51 |
| 25 13/16 7/8 15/16 1 | SAC 205 SAC 205-13 SAC 205-14 SAC 205-15 SAC 205-16 | 80 3-5/32 | 22 55/64 | 2.0 5/64 | 30.5 1.2008 | 7.5 0.2953 | SA 205 SA 205-13 SA 205-14 SA 205-15 SA 205-16 | C 205 | 0.64 0.67 0.66 0.65 0.62 |
| 30 1-1/16 1-1/8 1-3/16 1-1/4 | SAC 206 SAC 206-17 SAC 206-18 SAC 206-19 SAC 206-20 | 85 3-11/32 | 27 1-1/16 | 2.0 5/64 | 33.9 1.3346 | 8.0 0.3150 | SA 206 SA 206-17 SA 206-18 SA 206-19 SA 206-20 | C 206 | 0.82 0.86 0.84 0.80 0.77 |
| 35 1-1/4 1-5/16 1-3/8 1-7/16 | SAC 207 SAC 207-20 SAC 207-21 SAC 207-22 SAC 207-23 | 90 3-35/64 | 28 1-7/64 | 2.0 5/64 | 37.5 1.4764 | 8.5 0.3543 | SA 207 SA 207-20 SA 207-21 SA 207-22 SA 207-23 | C 207 | 0.93 0.99 0.96 0.94 0.91 |
| 40 1-1/2 | SAC 208 SAC 208-24 | 100 3-15/16 | 30 1-3/16 | 2.5 3/32 | 40.5 1.5945 | 9.5 0.3740 | SA 208 SA 208-24 | C 208 | 1.20 1.23 |
| 45 1-5/8 1-11/16 1-3/4 | SAC 209 SAC 209-26 SAC 209-27 SAC 209-28 | 110 4-21/64 | 31 1-7/32 | 2.5 3/32 | 42.2 1.6614 | 10.0 0.3937 | SA 209 SA 209-26 SA 209-27 SA 209-28 | C 209 | 1.50 1.63 1.57 1.54 |
| 50 1-7/8 1-15/16 2 | SAC 210 SAC 210-30 SAC 210-31 SAC 210-32 | 120 4-23/32 | 33 1-19/64 | 2.5 3/32 | 43.7 1.7205 | 10.5 0.4134 | SA 210 SA 210-30 SA 210-31 SA 210-32 | C 210 | 1.92 1.97 1.95 1.89 |
| 55 2 2-1/16 2-1/8 2-3/16 | SAC 211 SAC 211-32 SAC 211-33 SAC 211-34 SAC 211-35 | 125 4-59/64 | 35 1-3/8 | 2.5 3/32 | 48.4 1.9055 | 11.5 0.4528 | SA 211 SA 211-32 SA 211-33 SA 211-34 SA 211-35 | C 211 | 1.96 2.27 2.22 2.05 1.90 |