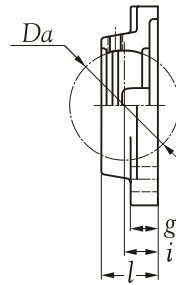
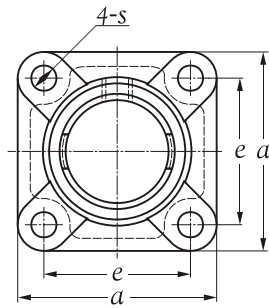




## Technical Information



| Inner bore<br>$Da$<br>mm | Housing number | Nominal dimensions<br>mm |     |      |      |      |      | Available<br>Bearing No. | Mass<br>kg |
|--------------------------|----------------|--------------------------|-----|------|------|------|------|--------------------------|------------|
|                          |                | $a$                      | $e$ | $i$  | $l$  | $g$  | $s$  |                          |            |
| 47                       | SS F 204       | 86                       | 64  | 15.1 | 25.4 | 12.0 | 11.1 | SS UC 204                | 0.47       |
| 52                       | SS F 205       | 95                       | 70  | 15.9 | 27.0 | 14.0 | 11.5 | SS UC 205                | 0.65       |
| 62                       | SS F 206       | 108                      | 83  | 17.9 | 30.0 | 14.0 | 13.1 | SS UC 206                | 0.85       |
| 72                       | SS F 207       | 118                      | 92  | 19.1 | 33.0 | 14.3 | 13.1 | SS UC 207                | 1.03       |
| 80                       | SS F 208       | 130                      | 102 | 21.0 | 36.0 | 14.3 | 14.0 | SS UC 208                | 1.38       |
| 85                       | SS F 209       | 137                      | 105 | 21.8 | 38.0 | 14.3 | 16.0 | SS UC 209                | 1.50       |
| 90                       | SS F 210       | 143                      | 111 | 21.8 | 39.0 | 15.1 | 16.0 | SS UC 210                | 1.63       |
| 100                      | SS F 211       | 162                      | 130 | 25.0 | 43.0 | 19.5 | 16.0 | SS UC 211                | 3.80       |
| 110                      | SS F 212       | 175                      | 143 | 29.0 | 48.0 | 19.5 | 19.0 | SS UC 212                | 4.36       |