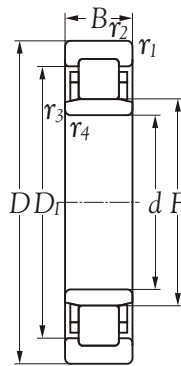


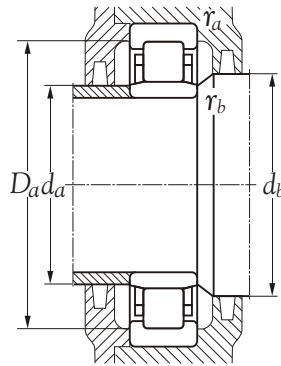


Technical Information



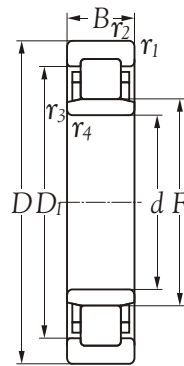
Inner bore <i>d</i> mm	Bearing number	Principal dimensions		Basic load ratings		Max runout speed		Mass kg
		<i>D</i> mm	<i>B</i> mm	dynamic <i>C</i> N	static <i>C</i> <sub>0</sub>	grease r/min	oil r/min	
15	NU 202 EC	35	11	10000	8100	12600	15400	0.047
17	NU 203 EC	40	12	13700	11400	11200	13300	0.068
20	NU 204 EC	47	14	20000	17600	9100	11200	0.110
25	NU 205 EC	52	15	22800	21600	7700	9800	0.130
30	NU 206 EC	62	16	30400	29200	6600	8400	0.200
35	NU 207 EC	72	17	38700	38400	5900	7000	0.300
40	NU 208 EC	80	18	43100	42400	5200	6300	0.370
45	NU 209 EC	85	19	48400	51200	4600	5600	0.430
50	NU 210 EC	90	20	51500	55600	4400	5200	0.480
55	NU 211 EC	100	21	67300	76000	4200	4900	0.660
60	NU 212 EC	110	22	74800	81600	3700	4400	0.810
65	NU 213 EC	120	23	84800	94400	3300	3900	1.050
70	NU 214 EC	125	24	95200	109600	3100	3700	1.150
75	NU 215 EC	130	25	104000	124800	3100	3700	1.250
80	NU 216 EC	140	26	110400	132800	2800	3300	1.500
85	NU 217 EC	150	28	132000	160000	2600	3100	1.900
90	NU 218 EC	160	30	146400	176000	2500	2600	2.350
95	NU 219 EC	170	34	200800	244000	2200	2500	3.450
100	NU 220 EC	180	36	211200	252000	2100	2300	3.850
105	NU 221 EC	190	38	233600	292000	1900	2100	4.000
110	NU 222 EC	200	40	272800	344000	1600	1900	4.800
120	NU 224 EC	215	40	286400	364000	1500	1800	5.750
130	NU 226 EC	230	42	312800	408000	1400	1600	6.450
140	NU 228 EC	250	45	356800	480000	1300	1500	8.300
150	NU 230 EC	270	48	400800	544000	1200	1500	10.500
160	NU 232 EC	290	52	492800	652000	1200	1400	15.000
170	NU 234 EC	310	52	501600	680000	1100	1300	19.000
180	NU 236 EC	320	55	554400	772000	1100	3000	19.500
190	NU 238 EC	340	32	176000	212000	2300	2800	23.500
200	NU 240 EC	360	58	612000	84800	1000	1200	28.500
200	NU 244	400	65	612000	86400	1000	1200	38.500
240	NU 248	440	72	761600	1096000	900	1100	51.000
260	NU 252	480	80	936000	1360000	700	900	68.500
280	NU 256	500	80	912000	1360000	700	900	71.500





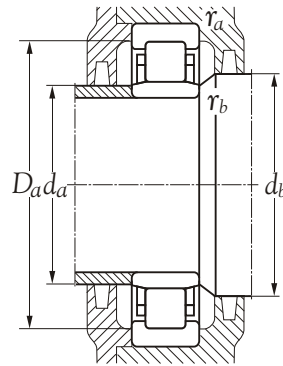
Inner bore <i>d</i> mm	Bearing number	Dimensions(mm)							Abutment and fillet dimensions(mm)						Angle ring Designation	Dimensions		Mass kg
		<i>d</i> <sub>1</sub>	<i>D</i> <sub>1</sub>	<i>F</i>	<i>r</i> <sub>1,2</sub> min	<i>r</i> <sub>3,4</sub> min	<i>s</i> <sup>o</sup>	<i>d</i> <sub>a</sub> min	<i>d</i> <sub>a</sub> max	<i>d</i> <sub>b</sub> max	<i>D</i> <sub>a</sub> max	<i>r</i> <sub>a</sub> max	<i>r</i> <sub>b</sub> max	<i>B</i> <sub>1</sub> mm		<i>B</i> <sub>2</sub> mm		
15	NU 202 EC	21.9	27.9	19.3	0.6	0.3	1.0	17.0	18	21	31.0	0.6	0.3	HJ 202 EC	2.5	5.0	0.005	
17	NU 203 EC	25.0	32.4	22.1	0.6	0.3	1.0	19.0	21	24	36.0	0.6	0.3	HJ 203 EC	3.0	5.5	0.008	
20	NU 204 EC	29.7	38.8	26.5	1.0	0.6	1.0	24.0	25	28	42.0	1.0	0.6	HJ 204 EC	3.0	5.5	0.011	
25	NU 205 EC	34.7	43.8	31.5	1.0	0.6	1.3	29.0	30	33	47.0	1.0	0.6	HJ 205 EC	3.0	6.0	0.014	
30	NU 206 EC	41.2	52.5	37.5	1.0	0.6	1.3	34.0	36	39	57.0	1.0	0.6	HJ 206 EC	4.0	7.0	0.025	
35	NU 207 EC	48.1	60.7	44.0	1.1	0.6	1.3	39.0	42	46	65.5	1.0	0.6	HJ 207 EC	4.0	7.0	0.033	
40	NU 208 EC	54.0	67.9	49.5	1.1	1.1	1.4	46.5	48	51	73.5	1.0	1.0	HJ 208 EC	5.0	8.5	0.047	
45	NU 209 EC	59.0	73.0	54.5	1.1	1.1	1.2	51.5	53	56	78.5	1.0	1.0	HJ 209 EC	5.0	8.5	0.052	
50	NU 210 EC	64.0	78.0	59.5	1.1	1.1	1.5	56.5	57	62	83.5	1.0	1.0	HJ 210 EC	5.0	9.0	0.058	
55	NU 211 EC	70.8	86.3	66.0	1.5	1.1	1.0	61.5	64	68	92.0	1.5	1.0	HJ 211 EC	6.0	9.5	0.083	
60	NU 212 EC	77.5	95.7	72.0	1.5	1.5	1.4	68.0	70	74	102.0	1.5	1.5	HJ 212 EC	6.0	10.0	0.100	
65	NU 213 EC	84.4	104.0	78.5	1.5	1.5	1.4	73.0	76	81	112.0	1.5	1.5	HJ 213 EC	6.0	10.0	0.120	
70	NU 214 EC	89.4	109.0	83.5	1.5	1.5	1.2	78.0	81	86	117.0	1.5	1.5	HJ 214 EC	7.0	11.0	0.150	
75	NU 215 EC	94.3	114.0	88.5	1.5	1.5	1.2	83.0	86	91	122.0	1.5	1.5	HJ 215 EC	7.0	11.0	0.160	
80	NU 216 EC	101.0	123.0	95.3	2.0	2.0	1.4	89.0	93	98	131.0	2.0	2.0	HJ 216 EC	8.0	12.5	0.210	
85	NU 217 EC	107.0	131.0	100.5	2.0	2.0	1.5	94.0	98	103	141.0	2.0	2.0	HJ 217 EC	8.0	12.5	0.240	
90	NU 218 EC	114.0	140.0	107.0	2.0	2.0	1.8	99.0	104	110	151.0	2.0	2.0	HJ 218 EC	9.0	14.0	0.310	
95	NU 219 EC	120.0	149.0	112.5	2.1	2.1	1.7	106.0	110	115	159.0	2.0	2.0	HJ 219 EC	9.0	14.0	0.330	
100	NU 220 EC	127.0	157.0	119.0	2.1	2.1	1.7	111.0	116	122	169.0	2.0	2.0	HJ 220 EC	10.0	15.0	0.420	
105	NU 221 EC	134.0	164.0	125.0	2.1	2.1	2.0	116.0	122	128	179.0	2.0	2.0	HJ 221 EC	10.0	16.0	0.510	
110	NU 222 EC	141.0	174.0	132.5	2.1	2.1	2.1	121.0	130	135	189.0	2.0	2.0	HJ 222 EC	12.0	17.0	0.600	
120	NU 224 EC	153.0	188.0	143.5	2.1	2.1	1.9	131.0	140	145	204.0	2.0	2.0	HJ 224 EC	18.0	17.0	0.690	
130	NU 226 EC	164.0	202.0	153.5	3.0	3.0	2.1	143.0	150	156	217.0	2.5	2.5	HJ 226 EC		17.0	0.750	
140	NU 228 EC	179.0	217.0	169.0	3.0	3.0	2.4	153.0	166	172	237.0	2.5	2.5	HJ 228 EC		18.0	0.960	
150	NU 230 EC	193.0	234.0	182.0	3.0	3.0	2.5	163.0	178	185	257.0	2.5	2.5	HJ 230 EC	12.0	19.5	1.250	
160	NU 232 EC	206.0	250.0	195.0	3.0	3.0	2.7	173.0	191	198	277.0	2.5	3.0	HJ 232 EC	12.0	20.0	1.450	
170	NU 234 EC	220.0	269.0	207.0	4.0	4.0	2.9	186.0	203	210	210.0	3.0	3.0	HJ 234 EC	12.0	20.0	1.650	
180	NU 236 EC	230.0	279.0	217.0	4.0	4.0	2.9	196.0	213	220	220.0	3.0	3.0	HJ 236 EC	12.0	20.0	1.700	
190	NU 238 EC	244.0	295.0	230.0	4.0		3.0	206.0	226	234	234.0	3.0	3.0	HJ 238 EC	13.0	21.5	2.100	
200	NU 240 EC	258.0	312.0	243.0	4.0	4.0	2.6	216.0	239	247	384.0	3.0	3.0	HJ 240 EC	14.0	23.0	2.550	
200	NU 244	286.0	332.0	270.0	4.0	4.0	2.3	236.0	263	276	384.0	3.0	3.0	H 244	15.0	27.5	3.650	
240	NU 248	313.0	365.0	295.0	4.0	4.0	3.4	256.0	288	299	424.0	3.0	3.0	HJ 248	16.0	29.5	4.700	
260	NU 252	340.0	397.0	320.0	5.0	5.0	3.4	280.0	313	324	460.0	4.0	4.0	HJ 252	18.0	33.0	6.300	
280	NU 256	360.0	417.0	340.0	5.0	5.0	3.8	300.0	333	344	480.0	4.0	4.0	HJ 256	18.0	33.0	6.700	





Inner bore <i>d</i> mm	Bearing number	Principal dimensions		Basic load ratings		Max runout speed		Mass kg
		<i>D</i> mm	<i>B</i> mm	dynamic <i>C</i> N	static <i>C</i> <sub>0</sub>	grease r/min	oil r/min	
320	NU 264	580	92	1288000	1960000	600	800	115.000





Inner bore <i>d</i> mm	Bearing number	Dimensions(mm)						Abutment and fillet dimensions(mm)						Angle ring Designation	Dimensions		Mass kg
		<i>d</i> <sub>1</sub>	<i>D</i> <sub>1</sub>	<i>F</i>	<i>r</i> <sub>1,2</sub> min	<i>r</i> <sub>3,4</sub> min	<i>s</i> <sup>0</sup>	<i>d</i> <sub>a</sub> min	<i>d</i> <sub>a</sub> max	<i>d</i> <sub>b</sub> max	<i>D</i> <sub>a</sub> max	<i>r</i> <sub>a</sub> max	<i>r</i> <sub>b</sub> max		<i>B</i> <sub>1</sub> mm	<i>B</i> <sub>2</sub> mm	
320	NU 264	415	485.0	390	5	5	5.3	340	383	394	560	4	4	HJ 264	21	37	10.500

