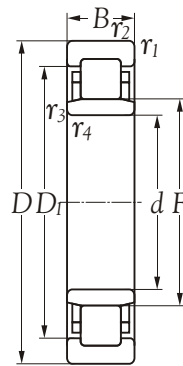


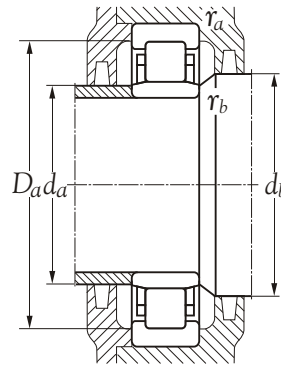


Technical Information



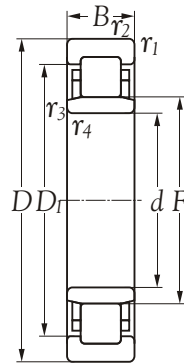
Inner bore <i>d</i> mm	Bearing number	Principal dimensions		Basic load ratings		Max runout speed		Mass kg
		<i>D</i> mm	<i>B</i> mm	dynamic <i>C</i> N	static <i>C</i> <sub>0</sub>	grease r/min	oil r/min	
20	NU 2204 EC	47	18	23700	22000	9100	11200	0.14
25	NU 2205 EC	52	18	27200	27200	7700	9800	0.16
30	NU 2206 EC	62	20	38700	39200	6600	8400	0.26
35	NU 2207 EC	72	23	47500	50400	5900	7000	0.40
40	NU 2208 EC	80	23	56300	60000	5200	6300	0.49
45	NU 2209 EC	85	23	58900	65200	4600	5600	0.52
50	NU 2210 EC	90	23	62400	70400	4400	5200	0.56
55	NU 2211 EC	100	25	79200	94400	4200	4900	0.79
60	NU 2212 EC	110	28	102400	122400	3700	4400	1.10
65	NU 2213 EC	120	31	117600	144000	3300	3900	1.40
70	NU 2214 EC	125	31	123200	154400	3100	3700	1.50
75	NU 2215 EC	130	31	128800	166400	3100	3700	1.60
80	NU 2216 EC	140	33	149600	196000	2800	3300	2.00
85	NU 2217 EC	150	36	172800	224000	2600	3100	2.45
90	NU 2218 EC	160	40	193600	252000	2500	3000	3.15
95	NU 2219 EC	170	43	228800	300000	2300	2800	4.00
100	NU 2220 EC	180	46	268800	360000	2200	2600	4.75
110	NU 2222 EC	200	53	304000	416000	1900	2300	6.70
120	NU 2224 EC	215	58	365600	504000	1600	2100	8.30
130	NU 2226 EC	230	64	422400	588000	1500	1900	10.50
140	NU 2228 EC	250	68	457600	664000	1400	1800	13.50
150	NU 2230 EC	270	73	501600	744000	1300	1600	19.00
160	NU 2232 EC	290	80	647200	960000	1200	1500	24.00
170	NU 2234 EC	310	86	774400	1144000	1200	1500	30.00
180	NU 2236 EC	320	86	808000	1200000	1100	1400	31.50
190	NU 2238 EC	340	92	880000	1328000	1100	1300	39.00
200	NU 2240 EC	360	98	984000	1520000	1000	1200	46.00
220	NU 2244 EC	400	108	1256000	1824000	800	1100	62.50
240	NU 2248	440	120	1160000	1888000	800	1000	84.00
260	NU 2252	480	130	1432000	2400000	700	900	110.00
280	NU 2256 EC	500	130	1760000	2600000	600	800	115.00
300	NU 2260	540	140	1672000	2760000	600	800	145.00
320	NU 2264	580	150	1904000	3200000	600	700	180.00
340	NU 2268	620	165	2112000	3600000	500	700	225.00





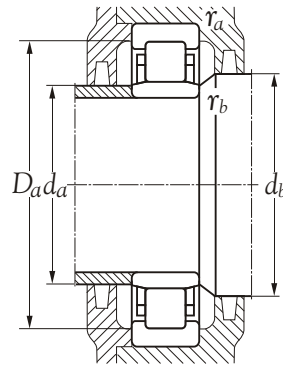
Inner bore $d$ mm	Bearing number	Dimensions							Abutment and fillet dimensions					Angle ring Designation	Dimensions		Mass kg
		$d_1$	$D_1$	$F$	$r_{1,2}$ min	$r_{3,4}$ min	$s^0$	$d_a$ min	$d_a$ max	$d_b$ max	$D_a$ max	$r_a$ max	$r_b$ max		$B_1$	$B_2$	
20	NU 2204 EC	29.7	38.8	26.5	1.0	0.6	2.0	24.0	25	28	42.0	1.0	0.6	HJ 2204 EC	3	7.5	0.012
25	NU 2205 EC	34.7	43.8	31.5	1.0	0.6	1.8	29.0	30	33	47.0	1.0	0.6	HJ 2205 EC	3	6.5	0.014
30	NU 2206 EC	41.2	52.5	37.5	1.0	0.6	1.8	34.0	36	39	57.0	1.0	0.6	HJ 2206 EC	4	7.5	0.028
35	NU 2207 EC	48.1	60.7	44.0	1.1	0.6	2.8	39.0	42	46	65.5	1.0	0.6	HJ 2207 EC	4	8.5	0.036
40	NU 2208 EC	54.0	67.9	49.5	1.1	1.1	1.9	46.5	48	51	73.5	1.0	1.0	HJ 2208 EC	5	9.0	0.048
45	NU 2209 EC	59.0	73.0	54.5	1.1	1.1	1.7	51.5	53	56	78.5	1.0	1.0	HJ 2209 EC	5	9.0	0.053
50	NU 2210 EC	64.0	78.0	59.5	1.1	1.1	1.5	56.5	57	62	83.5	1.0	1.0	HJ 210 EC	5	9.0	0.058
55	NU 2211 EC	70.8	86.3	66.0	1.5	1.1	1.5	61.5	64	68	92.0	1.5	1.0	HJ 2211 EC	6	10.0	0.085
60	NU 2212 EC	77.5	95.7	72.0	1.5	1.5	1.4	68.0	70	74	102.0	1.5	1.5	HJ 212 EC	6	10.0	0.100
65	NU 2213 EC	84.4	104.0	78.5	1.5	1.5	1.9	73.0	76	81	112.0	1.5	1.5	HJ 2213 EC	7	10.5	0.120
70	NU 2214 EC	89.4	109.0	83.5	1.5	1.5	1.7	78.0	81	86	117.0	1.5	1.5	HJ 2214 EC	7	11.5	0.150
75	NU 2215 EC	94.3	114.0	88.5	1.5	1.5	1.7	83.0	86	91	122.0	1.5	1.5	HJ 2215 EC	8	11.5	0.160
80	NU 2216 EC	101.0	123.0	95.3	2.0	2.0	1.4	89.0	93	98	131.0	2.0	2.0	HJ 216 EC	8	12.5	0.210
85	NU 2217 EC	107.0	131.0	100.5	2.0	2.0	2.0	94.0	98	103	141.0	2.0	2.0	HJ 217 EC	9	12.5	0.240
90	NU 2218 EC	114.0	140.0	107.0	2.0	2.0	2.6	99.0	104	110	151.0	2.0	2.0	HJ 2218 EC	9	15.0	0.310
95	NU 2219 EC	120.0	149.0	112.5	2.1	2.1	3.0	106.0	110	115	159.0	2.0	2.0	HJ 2219 EC	10	15.5	0.350
100	NU 2220 EC	127.0	157.0	119.0	2.1	2.1	2.5	111.0	116	122	169.0	2.0	2.0	HJ 2220 EC	11	16.0	0.430
110	NU 2222 EC	141.0	174.0	132.5	2.1	2.1	3.7	121.0	129	135	189.0	2.0	2.0	HJ 2222 EC	11	19.5	0.630
120	NU 2224 EC	153.0	188.0	143.5	2.1	2.1	3.8	131.0	140	146	204.0	2.0	2.0	HJ 2224 EC	11	20.0	0.740
130	NU 2226 EC	164.0	202.0	153.5	3.0	3.0	4.3	143.0	149	156	217.0	2.5	2.5	HJ 2226 EC	11	21.0	0.830
140	NU 2228 EC	179.0	217.0	169.0	3.0	3.0	4.4	153.0	164	172	237.0	2.5	2.5	HJ 2228 EC	11	23.0	1.050
150	NU 2230 EC	194.0	234.0	182.0	3.0	3.0	4.9	163.0	179	185	257.0	2.5	2.5	HJ 2230 EC	12	24.5	1.350
160	NU 2232 EC	205.0	252.0	193.0	3.0	3.0	4.5	173.0	188	196	277.0	2.5	2.5	HJ 2232 EC	12	24.5	1.550
170	NU 2234 EC	219.0	270.0	205.0	4.0	4.0	4.2	186.0	200	208	294.0	3.0	3.0	HJ 2234 EC	12	24.0	1.750
180	NU 2236 EC	229.0	280.0	215.0	4.0	4.0	4.2	196.0	210	218	304.0	3.0	3.0	HJ 2236 EC	13	24.0	1.850
190	NU 2238 EC	242.0	297.0	228.0	4.0	4.0	5.0	206.0	222	232	324.0	3.0	3.0	HJ 2238 EC	14	26.5	2.300
200	NU 2240 EC	256.0	313.0	241.0	4.0	4.0	5.1	216.0	235	245	344.0	3.0	3.0	HJ 2240 EC	15	28.0	2.750
220	NU 2244 EC	279.0	349.0	259.0	4.0	4.0	7.9	236.0	255	264	384.0	3.0	3.0	HJ 2244 EC	16	29.0	3.500
240	NU 2248	313.0	365.0	295.0	4.0	4.0	4.3	256.0	284	299	424.0	3.0	3.0	HJ 2248	11	38.5	5.450
280	NU 2256 EC	350.0	433.0	327.0	5.0	5.0	10.2	300.0	320	331	480.0	4.0	4.0	HJ 2256 EC	20	38.0	6.750
300	NU 2260	387.0	451.0	364.0	5.0	5.0	5.6	320.0	352	368	520.0	4.0	4.0	HJ 2260	21	45.0	9.900
320	NU 2264	415.0	485.0	390.0	5.0	5.0	5.9	340.0	377	394	560.0	4.0	4.0	HJ 2264		48.5	12.500
340	NU 2268		515.0	416.0	6.0	6.0	8.0	366.0	401	421	594.0	5.0	5.0		11		
360	NU 2272		542.0	437.0	6.0	6.0	16.7	386.0	428	442	624.0	5.0	5.0				





Inner bore <i>d</i> mm	Bearing number	Principal dimensions		Basic load ratings		Max runout speed		Mass kg
		<i>D</i> mm	<i>B</i> mm	dynamic <i>C</i> N	static <i>C<sub>0</sub></i> N	grease r/min	oil r/min	
360	NU 2272	650	170	2336000	3920000	500	600	255
380	NU 2276	680	175	2512000	4400000	500	600	285





Inner bore <i>d</i> mm	Bearing number	Dimensions						Abutment and fillet dimensions						Angle ring Designation	Dimensions		Mass kg
		<i>d</i> <sub>1</sub>	<i>D</i> <sub>1</sub>	<i>F</i>	<i>r</i> <sub>1,2</sub> min	<i>r</i> <sub>3,4</sub> min	<i>s</i> <sup>0</sup>	<i>d</i> <sub>a</sub> min	<i>d</i> <sub>a</sub> max	<i>d</i> <sub>b</sub> max	<i>D</i> <sub>a</sub> max	<i>r</i> <sub>a</sub> max	<i>r</i> <sub>b</sub> max		<i>B</i> <sub>1</sub>	<i>B</i> <sub>2</sub>	
380	NU 2276	567	462	6	6	8.3	406	447	467	654	5	5					

