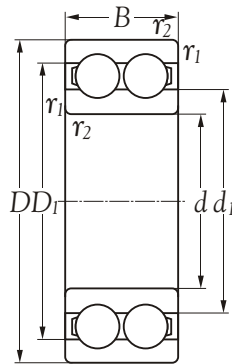


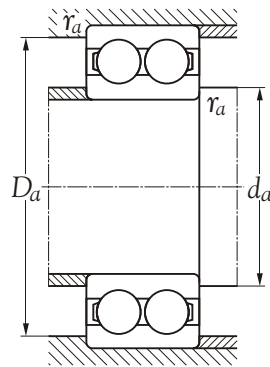


Technical Information



Inner bore <i>d</i> mm	Bearing number	Principal dimensions		Basic load ratings		Max runout speed		Mass kg
		<i>D</i> mm	<i>B</i> mm	dynamic <i>C</i> N	static <i>C₀</i> N	grease r/min	oil r/min	
12	4301 A	37	17	10400	6200	10500	12600	0.092
15	4302 A	42	17	11800	7600	8400	10500	0.120
17	4303 A	47	19	15600	10500	7000	9100	0.160
20	4304 A	52	21	18700	12800	6600	8400	0.210
25	4305 A	62	24	25500	17900	5900	7000	0.340
30	4306 A	72	27	32800	24000	4900	5900	0.500
35	4307 A	80	31	40500	30400	4400	5200	0.690
40	4308 A	90	33	44700	36000	3900	4600	0.950
45	4309 A	100	36	55100	44800	3500	4200	1.250
50	4310 A	110	40	65500	55600	3100	3700	1.700
55	4311 A	120	43	78000	66400	3000	3500	2.150
60	4312 A	130	46	89600	78400	2600	3100	2.650
65	4313 A	140	48	96800	84800	2500	3000	3.250





Inner bore <i>d</i> mm	Bearing number	Dimensions(mm)			Abutment and fillet dimensions(mm)		
		d_1 ≈	D_1 ≈	$r_{1,2}$ min	d_a min	D_a max	r_a max
12	4301 A	20.5	28.5	1.0	17.0	32.0	1.0
15	4302 A	24.5	32.5	1.0	20.0	37.0	1.0
17	4303 A	28.7	38.3	1.0	22.0	42.0	1.0
20	4304 A	31.8	42.2	1.1	26.5	45.5	1.0
25	4305 A	37.3	49.7	1.1	31.5	55.5	1.0
30	4306 A	43.9	58.1	1.1	36.5	65.5	1.0
35	4307 A	49.5	65.4	1.5	43.0	72.0	1.5
40	4308 A	56.9	73.1	1.5	48.0	82.0	1.5
45	4309 A	63.5	81.5	1.5	53.0	92.0	1.5
50	4310 A	70.0	90.0	2.0	59.0	101.0	2.0
55	4311 A	76.5	98.5	2.0	64.0	111.0	2.0
60	4312 A	83.1	107.0	2.1	71.0	119.0	2.0
65	4313 A	89.6	115.0	2.1	76.0	129.0	2.0

